

State of Wyoming Corner Record

(In compliance with the **CORNER PERPETUATION AND FILING ACT**, Wyoming Statutes, 1997 Section 33-29-140 et. seq., and the Rules and Regulations of the Board of Professional Engineers and Professional Land Surveyors)

Reverse side of this form may be used if more space is needed.

Record of original survey and citation of source of historical information (if corner is lost or obliterated). Description of corner monumentation evidence found and/or monument and accessories established to perpetuate the location of this corner. Sketch of relative location of monument, accessories, and reference points with course and distance to adjacent corner(s) (if determined in this survey). Method and rationale for reestablishment of lost or obliterated corner.

ORIGINAL RECORD: Set a red sandstone 18"x12"x5" for cor. Secs. 14, 13, 24 & 23.

FOUND: Rebar with flagging. PK Nail in a power pole 49.9 feet to the S43°35'32"E. A property corner LS 5910 33.0 feet to the N89°45'57"E.

SET: Held rebar. Set an aluminum cap LS 14407 and two PK nails 44.4 feet to the N55°31'02"W and 32.9 feet to the N89°54'27"W.

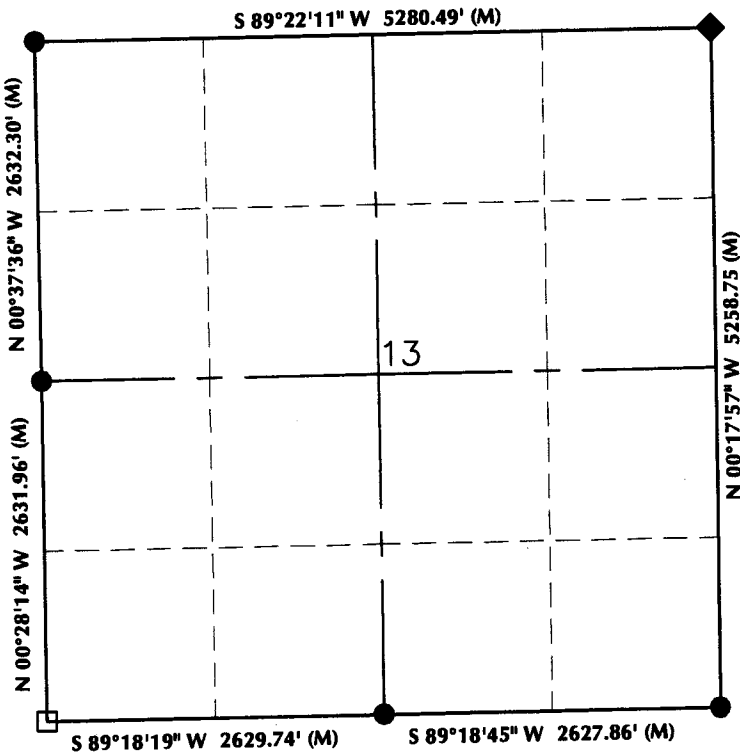
Monument Location



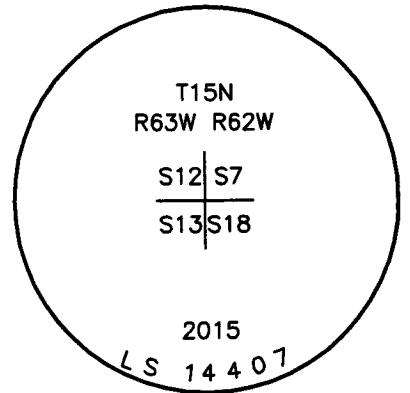
RECP #: 666119

RECORDED 7/27/2015 AT 12:24 PM BK# 2456 PG# 118

Debra K. Lathrop, CLERK OF LARAMIE COUNTY, WY PAGE 1 OF 1



Monument Inscription



NOTES:

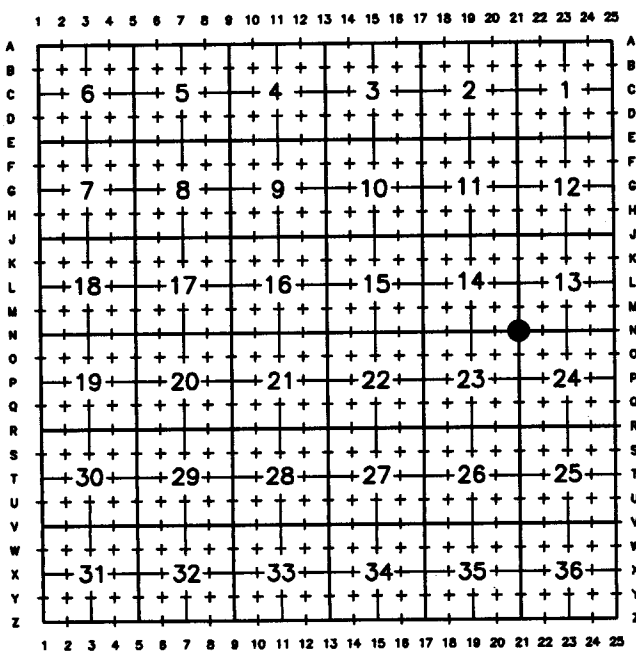
1. ▲ INDICATES FOUND BLM BRASS CAP
2. ■ INDICATES FOUND STONE
3. ● INDICATES FOUND ALUMINUM CAP
4. ◆ INDICATES SET ALUMINUM CAP
5. □ INDICATES SECTION CORNER PER CORNER RECORD
6. BASIS OF BEARING DERIVED FROM WYOMING COORDINATE SYSTEM NAD83 EAST ZONE
7. ALL MEASURED DISTANCES ARE GRID COMBINED SCALE FACTOR: .99972660
8. DRAWING NOT TO SCALE



Date of Field Work: 7/13/15

Office Reference: 14-49

Cross Index Plat



Land Surveyor/Firm/Address

609 Consulting, LLC
1095 Saberton Avenue
Sheridan, WY 82801

Telephone Number: 307-674-0609

This corner record was prepared by me or under my direction and supervision.

SEAL & SIGNATURE

Corner Name: Southwest Corner Section 13, T15N, R63W, 6th P.M. County: Laramie Wyoming

Cross-Index No.: N-21

SBRPEPLS/PLSW: March 1994; PLSW January 1998